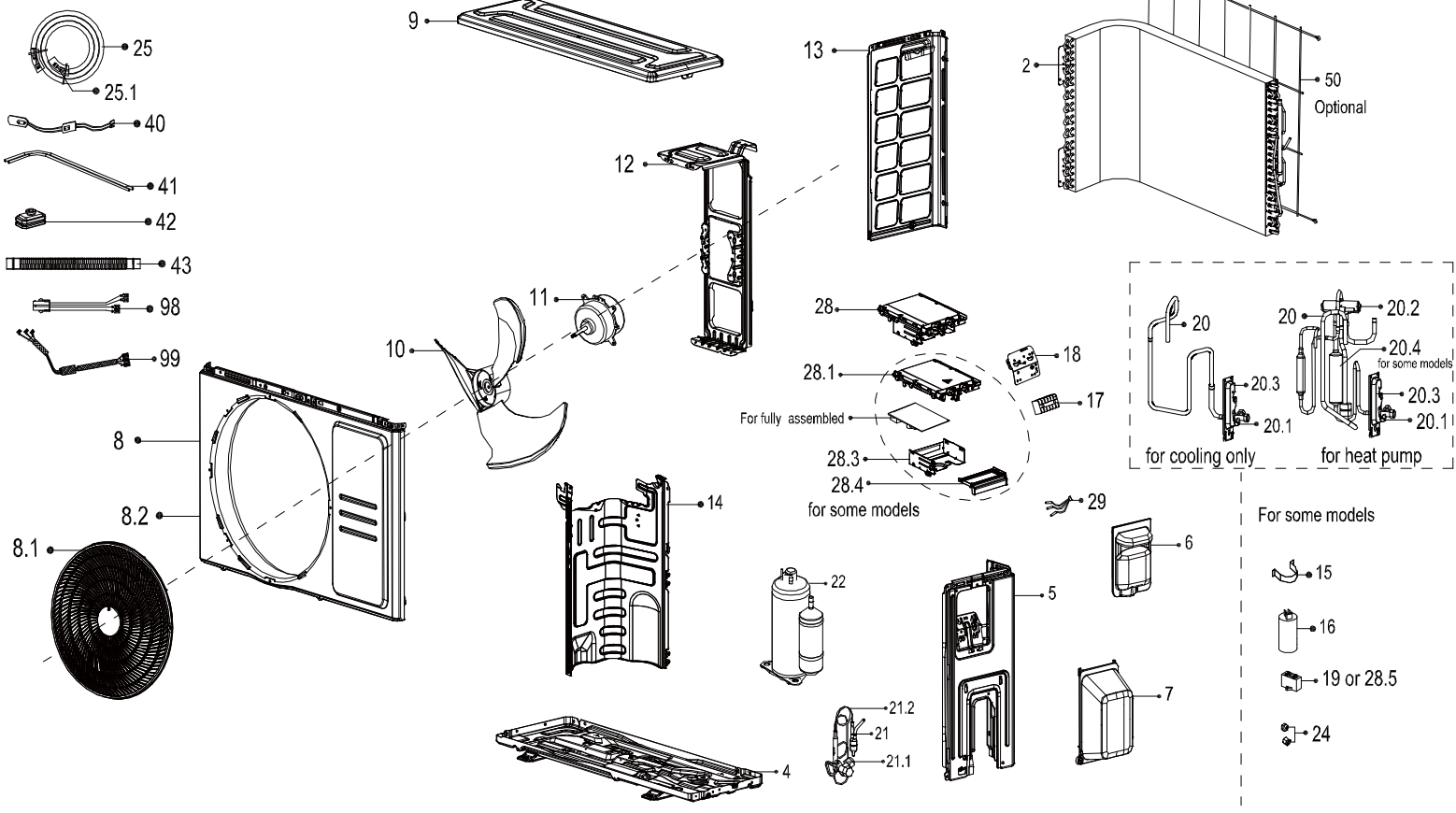


Optional function parts



Exploded View

产品编码(Product model) : 22022016015240
 客户编码(Customer No) : G0011405
 客户型号(Customer model) : KWX-09HRHO
 订单编码(Order Product Code) : 62220-J2848802

EX_ID	Spare Parts Code	Part Name(CN)	Part Name(EN)	Qty.	Remark2	Part Status	Drawing No	MIN_ORDE_R_QTY	Long Term Material(Y or N)	High Rate of Replacement(Y or N)	SB Type	Replace Type	Remarks
2	1582200009658	冷凝器部件	Condenser Assembly	1		In Use	KFR-26W/BP2N8-X101.JC.ZL_1	1					
4	12222000012131	底盘部件	Chassis Assembly	1		In Use	WX101.BJ.5	1					
5	12222000012141	右侧板部件	Right Clapboard Assembly	1		In Use	WX101.BJ.4	1					
6	12122000031166	大把手部件	Big Handle Assembly	1		In Use	WX201.SL.1	1					
7	12122000007150	接水盖	Water Collector	1		In Use	BA01.SL.2	1					
8	12222000012137	前面板部件	Front Panel Assembly	1		In Use	WX101.BJ.1	1					
8.1	12122000024226	出风网罩	Air-Out Mesh Enclosure	1		In Use	WX101.SL.1	1					
8.2	12222000012138	前面板	Front panel	1		In Use	WX101.BJ.1-1	1					
9	12222000014305	顶盖部件	Top Cover Assembly	1		In Use	WX101.BJ.2A	1					
10	12100105000821	轴流风叶	Axial Flow Fan	1		In Use	ZL-415*129*8-3KN	1					12100105000821
11	11002015012128	无刷直流电机	Brushless DC Motor	1		In Use	ZKFN-34-10-1-3	1					11002015012128
12	12222000012390	电机支架	Motor Bracket	1		In Use	WX101.BJ.10-1	1					
13	12222000012135	左侧板	Left Side Panel	1		In Use	WX101.BJ.1	1					
14	12222000013428	隔板部件	Partition Board Assembly	1		In Use	WX101.BJ.5B	1					
17	17400401000016	接线座(P位)	Terminal	1		In Use	JXZ-PG6H-A	1					
18	12222000002259	端子安装板	Terminal Board	1		In Use	BA01.BJ.11	1					
20	15422000017673	四通阀部件	4-way Valve Assembly	1		In Use	KFR-26W/BP2N8-X101.JC.ZL.2A	1					
20.1	15500204000021	低压阀	Gas Valve	1		In Use	DYF-A28N	1					
20.2	15500216001903	四通阀	Four-Way Valve	1		In Use	STF-01N1	1					
20.3	12222000002571	阀安装板(SB2098)	Valve Plate	1		In Use	A01.BJ.8	1					
20.4	15122000025014	消声器组件	Muffler Subassembly	1		In Use	KFR-26W/BP2N8-X101.JC.ZL.2.1	1					
21	15422000016434	高压阀部件	Liquid valve Assembly	1		In Use	EU-KFR35W/BP3N8-X130(RD0)-GW.ZL.1	1					
21.1	155002080000028	高压阀	Liquid Valve	1		In Use	GYF-A28N	1					
21.2	15122000011174	毛细管	Capillary	1		In Use	US1-KFR26W/BP2N1-BA01(Q0)-W.ZL.3-1	1					
22	11103020005082	变频旋转式压缩机	DC Inverter Rotary Compressor	1		In Use	KSK103D33UEZ3	1					11103020005082
24	15500406000010	铜螺母	Copper nut	1	A01=6.35mm(1/4 in);B02=9.52mm(3/8in);C03=12.7mm(1/2 in);D04=15.9mm(5/8in);E05=19mm(3/4in);F07=22mm(7/8in);	In Use	TLM-B02	0	N	N	SB01738	15500406000015	
24	15500406000016	铜螺母	Copper nut	1	A01=6.35mm(1/4 in);B02=9.52mm(3/8in);C03=12.7mm(1/2 in);D04=15.9mm(5/8in);E05=19mm(3/4in);F07=22mm(7/8in);	In Use	TLM-A01	0	N	N			
28	172220000A59951	外销变频室外电控盒组件	Electronic control box subassembly	1		In Use	EU-KFR26W/BP3N8-X130(AF/MA_KSK103D33UEZ3_RX24Tmini_S DM15G60_SDH8654_4204).JD.FW.WXWK2.D K1.2(AGWL)	1					
28.1	12122000024223	电器安装板	Support of Electronic Control Box	1		In Use	WX101.SL.2	1					
28.2	171220000A42479	外销变频室外主控制板组件	Outdoor main control board subassembly	1		In Use	EU-KFR26W/BP3N8-X130(AF/MA_KSK103D33UEZ3_RX24Tmini_S DM15G60_SDH8654_4204).JD.FW.WXWK2.W K2.2(AGWL)	1					
28.3	12222000012106	电控安装盒组件	Electronic Installing Box Subassembly	1		In Use	WX101.BJ.6	1					
28.4	12122000024222	固定板	Fixing board	1		In Use	WX101.SL.3	1					
29	11201011000067	组合传感器	Combination Sensor	1		In Use	CGO-ZH-GW/SW/PQ-L735-XH-P500-3-01	1					

33	16022000C87663	能效标贴	Energy efficiency label	1		In Use	KAISAI-KFR26W/BP3N8-X133(RD0)-GW-0407	1					
40	17402001000600	曲轴电加热带	Crankcase electric heating strip	1		In Use	DJRD-320A-700-20W-2	1					
41	17402002000464	电加热管	Electric heating tube	1		In Use	DJRG-150W-030-2	1					
99	17401203012697	压缩机连接线组	Compressor Wires Subassembly	1		In Use	PXQ-YSJ200RD/190BL210BK-14#PA66	1					