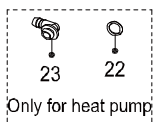
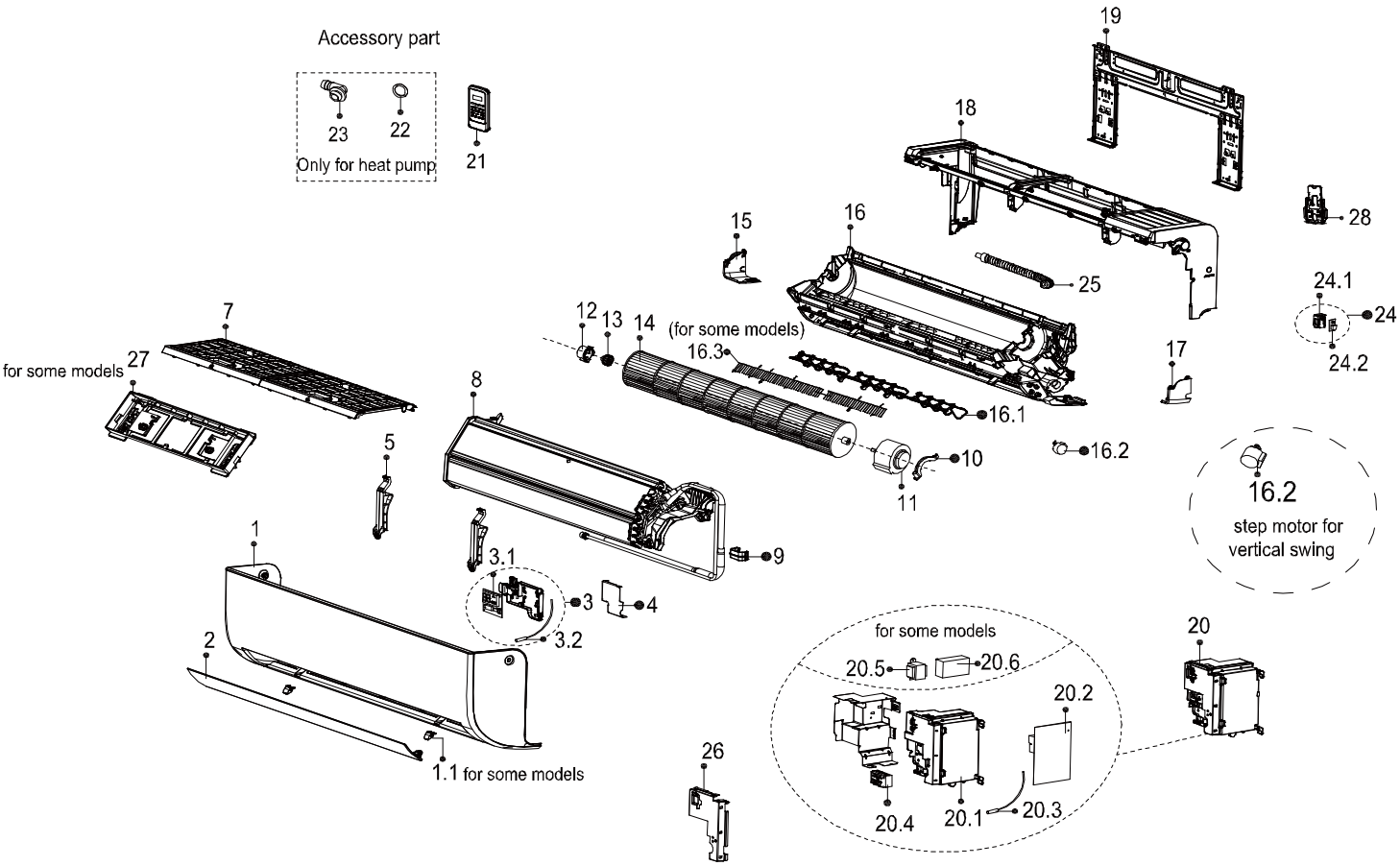


Accessory part



Only for heat pump



Optional part

- 40 ●
- 41 ●
- 42 ●
- 43 ●
- 44 ●
- 45 ●
- 46 ●
- 47 ●
- 48 ●
- 48.1 ●
- 49 ●
- 50 ●
- 98 ●

Exploded View

产品编码(Product model) : 22022011016642
 客户编码(Customer No) : G0011405
 客户型号(Customer model) : KRX-24PEGI
 订单编码(Order Product Code) : 62220-F3864307

EX_ID	Spare Parts Code	Part Name(CN)	Part Name(EN)	Qty.	Remark2	Part Status	Drawing No	MIN_ORDER_QTY	Long Term Material(Y or N)	High Rate of Replacement(Y or N)	SB Type	Replace Type	Remarks
1	12122000A84551	面罩部件	Panel assembly	1		In Use	KAISAI-KFR70G/N1Y-AE1.1-0102	1					
2	12122000012947	导风板 S1022 PAHs,REACH,RoHS CE-KFR70G/N1Y-AE1-1 瓷白	Horizontal louver	1		In Use	CE-KFR70G/N1Y-AE1-1						
3	17222000A21608	外销分体显示盒组件	Display box subassembly	1		In Use	EU-KFR26G/N1Y-AE.JD.GN.WXXS.XK1.4(WIFI)						
3.1	17122000021488	外销分体显示板组件	Display board subassembly	1		In Use	EU-KFR26G/N1Y-AE.JD.GN.WXXS.XS2.20						
3.2	11201007003103	室温传感器	Room Temperature Sensor	1		In Use	CGQ-WD/SW4100-L100-XHP2						
4	12122000013350	接线盖防护组件	Cover of electrical equipment subassembly	1		In Use	SA-KFR70G/N1Y-AFD.6	1					
5	12122000012963	中间支撑	Intermediate support	2		In Use	CE-KFR70G/N1Y-AE-10						
7	12122000012960	过滤网组件	Filter filter subassembly	2		In Use	CE-KFR70G/N1Y-AE.5						
8	15822000008466	蒸发器部件	Evaporator assembly	1		In Use	SA-KF70G/N1Y-AED(B6)-W.ZL(15U)(J)	1					
9	12122000012194	配管压板	pipe clamp board	1		In Use	CE-KFR53G/N1Y-AE-12	1					
10	12122000012959	电机压板	Fixing board of fan motor	2		In Use	CE-KFR70G/N1Y-VP-3	1					
11	11002015008646	无刷直流电机	Brushless DC Motor	1		In Use	ZKFP-58-8-1-5						
12	12122000011978	轴承座套	Bearing holder	1		In Use	CE-KFR35G/N1Y-AE-6						
13	12622000000131	轴承座组件	Bearing components	1		In Use	ZCZZJ-01	1					
14	12100102000018	贯流风轮	Cross flow fan	1		In Use	GL-108*818	1					
15	12122000012948	底盘前盖板(左)	Front cover of chassis(left)	1		In Use	CE-KFR70G/N1Y-AE-2	1					
16	12122000A37110	室内机底盘部件(下)	Chassis assembly(below)	1		In Use	CE-KFR70G/N1Y-AE.3B	1					
16.1	12122000A26198	驱动百叶	drive Louver	12		In Use	CE-KFR70G/N1Y-AE-25	1					
16.2	11002010000077	步进电机	Stepper motor	1		In Use	SM-30-17-12-15						
16.4	11002010000061	步进电机	stepper motor	1		In Use	SM-24-19-16-18						
17	12122000012964	底盘前盖板(右)	Front cover of chassis(right)	1		In Use	CE-KFR70G/N1Y-AE-3	1					
18	12122000015957	室内机底盘部件(上)	Chassis assembly(above)	1		In Use	CE-KFR70G/N1Y-AE.2	1					
19	12222000005705	室内机安装板组件	Installation Plate Subassembly	1		In Use	CE-KFR70G/N1Y-AE.6	1					
20	17222000A60991	外销分体室内电控盒组件(中低端)	Electronic control box subassembly (Mid-and low-end)	1		In Use	EU-KFR70G/BP3N1Y-AED-W.JD.GN.WXNK.DK2.3(EE2/ION)	1					
20.1	12122000020046	电控盒结构组件	Electronic control box subassembly	1		In Use	SA-KFR70G/N1Y-AFD.5	1					
20.2	17122000051462	外销分体室内主控板组件	Main control board subassembly	1		In Use	EU-KFR70G/BP3N1Y-AED-W.JD.GN.WXNK.NK2.2(EE2)						
20.3	11201007003447	管温传感器	Pipe Temperature Sensor	1		In Use	CGQ-WD/GW4100-L350-XACP2-P250						
20.4	17400401000576	接线座	Wire joint	1		In Use	JXZ-AD5ZG2-A	1					
21	17317000A63534	订单遥控器	Remote controller	1		In Use	RG10B1(F)/BGEF	1					
22	12600701000039	密封圈	seal ring	1		In Use	KC25B.4-8A	1					
23	12100509000061	出水接管	Drain hose	1		In Use	CSJG-1	1					
24	17222000009674	外销分体室内电控盒组件(中低端)	Electronic control box subassembly (Mid-and low-end)	1		In Use	SA-KF32G/Y-KEY.JD.GN.WXNK.DK2.1	1					
24.1	12122000011990	应急开关盒	Emergency switch box	1		In Use	CE-KFR35G/N1Y-AE-4						
24.2	17122000018905	按键板组件	Key board subassembly	1		In Use	CE-KF26G/AE-KEY.JD.GN.WXNK.NK2.1	1					
25	12100501000032	出水喉	Drain hose	1		In Use	KFR-26G/BP2DN1Y-IC-10	1					
26	12122000013356	电控盒盖组件	Electrical Control Box Cover Subassembly	1		In Use	SA-KFR70G/N1Y-AFD.7	1					
27	12122000014462	空气清新网支架	Filter support	2		In Use	CE-KFR35G/N1Y-AE-21						
28	12122000015241	底盘支撑部件	Support plate	2		In Use	CE-KFR35G/N1Y-AE.15						
40	12100204000685	冷触媒过滤网	Air freshening filter	1		In Use	KFR-23G/AY.1-1-10	1					
40	12100207000136	HEPA网	High efficiency particulate air filter	1		In Use	KFR-23G/IY.1-14A	1					
42	15500209000002	检测阀	Detection valve	1		In Use	JCF-02	1					

43	17400609A00026	正负离子发生器	Ion generator	1		In Use	ZFLZ-11	1					
45	12122000029201	遥控器安装支架组件	Bracket of remote Controller	1		In Use	RG10ZJ-1	1					
46	15500406000003	铜螺母	Copper nut	1	A01=6.35mm(1/4in);B02=9.52mm(3/8in);C03=12.7mm(1/2in);D04=15.9mm(5/8in);E05=19mm(3/4in);F07=22mm(7/8in);	In Use	TLM-D04	0	N	N			
46	15500406000010	铜螺母	Copper nut	1	A01=6.35mm(1/4in);B02=9.52mm(3/8in);C03=12.7mm(1/2in);D04=15.9mm(5/8in);E05=19mm(3/4in);F07=22mm(7/8in);	In Use	TLM-B02	0	N	N			
98	17310900A06289	WIFI模块组件	WIFI module subassembly	1		In Use	EU-OSK105.JD.TY.MWL.NET	1					