

Optional function parts



38



39



40



41



42



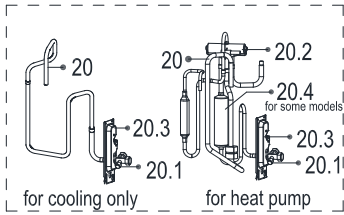
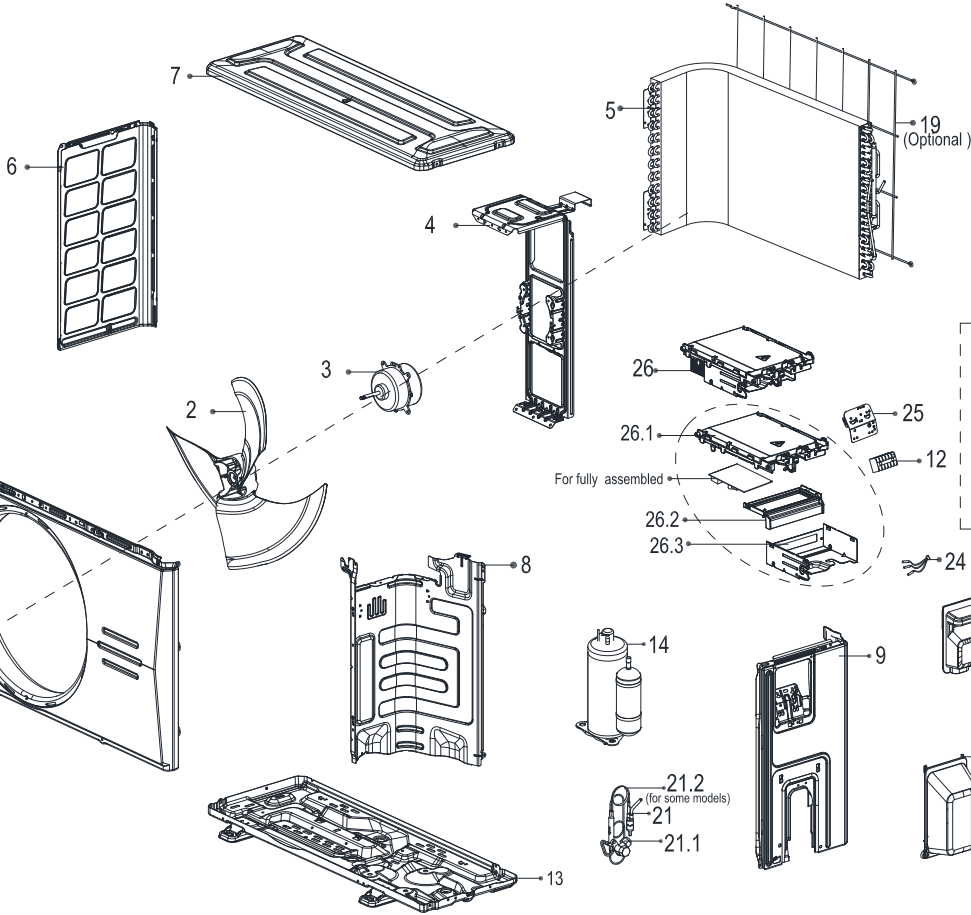
43



98



99



For some models

- 15
- 16
- 17
- 23

### Exploded View

产品编码(Product model) : 22022016015160  
 客户编码(Customer No) : G0011405  
 客户型号(Customer model) : KLWB-18HRHO  
 订单编码(Order Product Code) : 62220-H9529006

EX_ID	Spare Parts Code	Part Name(CN)	Part Name(EN)	Qty.	Remark2	Part Status	Drawing No	MIN_ORDE R_QTY	Long Term Material(Y or N)	High Rate of Replacemen t(Y or N)	SB Type	Replace Type	Remarks
1	12222000013385	前面板部件	Front panel assembly	1		In Use	WX301.BJ.1A	1					
1.1	12122000026241	出风网罩	Air outlet grille	1		In Use	WX301.SL.2	1					
1.2	12222000013386	前面板	Front panel	1		In Use	WX301.BJ.1A-1	1					
2	12100105000881	轴流风叶	Axial flow fan	1		In Use	ZL-434*144*8-3KN	1					
3	11002015012128	无刷直流电机	Brushless DC Motor	1		In Use	ZKFN-34-10-1-3	1					
4	12222000013200	电机支架	Supporter of fan motor	1		In Use	WX301.BJ.3-1	1					
5	15822000010396	冷凝器部件	Condenser assembly	1		In Use	EU-KFR50W/BP3N8-X301(RD0).ZL.1	1					
6	12222000013197	左侧板	Left supporter	1		In Use	WX301.BJ.6	1					
7	12222000013193	顶盖部件	Top cover assembly	1		In Use	WX301.BJ.2	1					
8	12222000014125	隔板部件	Partition board assembly	1		In Use	WX301.BJ.9	1					
9	12222000013190	右侧板部件	Right clapboard assembly	1		In Use	WX301.BJ.4	1					
10	12122000007150	接水盖	Water collector	1		In Use	BA01.SL.2	1					
11	12122000031166	大把手部件	Big handle assembly	1		In Use	WX201.SL.1	1					
12	17400401000016	接线座(6位)	Terminal	1		In Use	JXZ-PG6H-A	1					
13	12222000013204	底座部件	Chassis assembly	1		In Use	WX301.BJ.5	1					
14	11103020003919	变频旋转式压缩机	DC Inverter Rotary Compressor	1		In Use	KSN140D21UFZ	1					
20	15422000017792	四通阀部件	4-way valve assembly	1		In Use	EU-KFR50W/BP3N8-X301(RD0).ZL.2	1					
20.1	15500204000058	低压阀	Gas valve	1		In Use	DYF-B29N	1					
20.2	15500216001783	四通阀	4-way valve	1		In Use	STF-02BN1(VHR)	1					
20.3	12222200005738	阀安装板	Valve plate	1		In Use	KFR-72W-X401-1	1					
21	15422000018074	高压阀部件	Liquid valve Assembly	1		In Use	EU-KFR50W/BP3N8-X301(RD0).ZL.3	1					
21.1	15500208000028	高压阀	Liquid valve	1		In Use	GYF-A28N	1					
23	15500406000012	铜螺母	Copper nut	1	A01=6.3 5mm(1/4 in);B02= 9.52mm( 3/8in);C 03=12.7 mm(1/2 in);D04= 15.9mm( 5/8in);E0 5=19mm (3/4in);F 07=22m m(7/8in)	In Use	TLM-C03	0	N	N			
23	15500406000016	铜螺母	Copper nut	1	A01=6.3 5mm(1/4 in);B02= 9.52mm( 3/8in);C 03=12.7 mm(1/2 in);D04= 15.9mm( 5/8in);E0 5=19mm (3/4in);F 07=22m m(7/8in)	In Use	TLM-A01	0	N	N			
24	11201011000067	组合传感器	Combination sensor	1		In Use	CGO-ZH-GW/SW/PQ-L735-XH-P500-3-01	1					
25	12222000002259	端子安装板	Terminal board	1		In Use	BA01.BJ.11	1					
26	17222000A58712	外箱变频室外电控盒组件	Electronic control box subassembly	1		In Use	EU-KFR50W/BP3N8-X301(KSN140D21UFZ_RX24Tmini_6MBP20_S DH9654_4204).JD.FW.NXWKBDK1.1 (AGWL)	1					
26.1	12122000024223	电器安装板	Support of electronic control box	1		In Use	WX101.SL.2	1					
26.2	12122000024222	固定板	Fixing board	1		In Use	WX101.SL.3	1					
26.3	12222000012106	电控安装盒组件	Electronic installing box subassembly	1		In Use	WX101.BJ.6	1					
40	17402001000603	曲轴电加热带	Crankcase electric heating strip	1		In Use	DJRD-358A-800-20W-5	1					
41	17402002000464	电加热管	Electric heating tube	1		In Use	DJRG-150W-030-2	1					
99	17401203012697	压缩机连接线组	Compressor wire subassembly	1		In Use	PXQ-YSJ200RD/190BL/210BK-14#PA66	1					