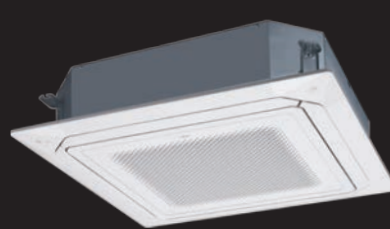


Cassette

Indoor unit
AUXG18/22/24/30/36/45/54KRLB

Outdoor unit
[Single phase] AOYG18/22/24/30/36/45/54KBTB
[3 phase] AOYG36/45/54KRTA



AUXG18/22/24KRLB

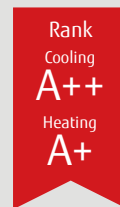


AUXG30/36/45/54KRLB



High efficiency and unique circular flow design

Cassette type realizes Circular Flow to blow large airflow in 360° direction by mounting high performance DC fan motor, turbo fan and unique seamless airflow louver design.



SEER

7.00

(18/22 models)

SCOP

4.40

(22 model)

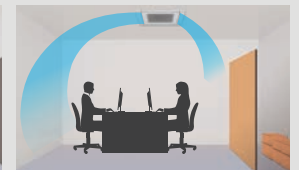
Individual louver control

Each louver can be set individually by Touch Panel Wired Remote Controller to enjoy the comfort of different directional airflows according to various room layouts.

*Touch Panel Wired RC (UTY-RNRYZ3) only



Comfortable air conditioning by preventing direct blowing of cold air and by providing swinging air flow simultaneously.



Efficient air conditioning based on the room layout



Compact and lightweight outdoor unit

45 model outdoor unit was changed completely. Easier installation was realized by compact and lightweight outdoor unit.



Current model



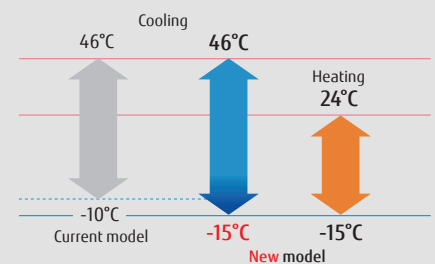
New 45/54 models

Height
-22.7%



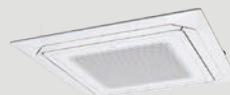
Low ambient operation

-10°C
↓
-15°C
at Cooling



Various cassette grille

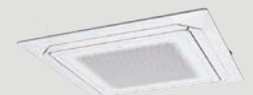
Both black and white color grilles are available. There are three types, white color grille with Remote Controller, only white color grille and only black color grille. Possible to choose according to the atmosphere and the use of the room.



UTG-UKYA-W
White Color Grille
With touch panel wired
remote controller

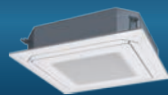


UTG-UKYA-B
Black Color Grille



UTG-UKYC-W
White Color Grille

Model: AUXG18KRLB / AUXG22KRLB / AUXG24KRLB / AUXG30KRLB / AUXG36KRLB / AUXG45KRLB / AUXG54KRLB
 [Single phase] AOYG18KBTB / AOYG22KBTB / AOYG24KBTB / AOYG30KBTB / AOYG36KBTB / AOYG45KBTB / AOYG54KBTB
 [3 phase] AOYG36KRTA / AOYG45KRTA / AOYG54KRTA



AUXG18/22/24KRLB



AUXG30/36/45/54KRLB



AOYG18/22KBTB



AOYG24KBTB



AOYG30/36KBTB
AOYG36KRTA



AOYG45/54KBTB
AOYG45/54KRTA

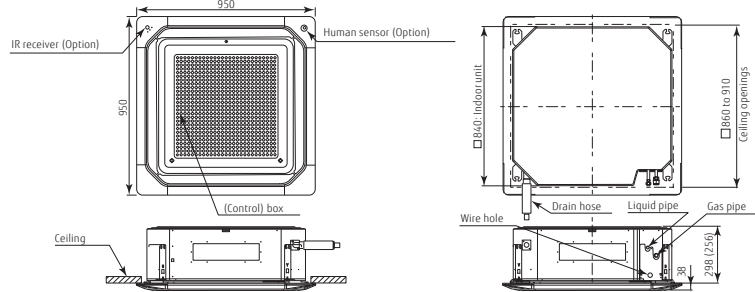
Optional parts

Wired Remote Controller:	UTY-RNRYZ3, UTY-RLRY, UTY-RVNYM, UTY-RNNYM
Simple Remote Controller:	UTY-RSRY, UTY-RHRY, UTY-RSNYM
IR Receiver Kit:	UTY-LBTYC
Wireless LAN Interface:	UTY-TFSXZ1
Human Sensor Kit:	UTY-SHZXC
Cassette Grille:	UTG-UKYA-W, UTG-UKYC-W, UTG-UKYA-B
Wide Panel:	UTG-AXXA-W
Panel Spacer:	UTG-BXXA-W
Fresh Air Intake Kit:	UTZ-VXRA
Air Outlet Shutter Plate:	UTR-YDZK
Insulation Kit for High Humidity:	UTZ-KXRA
External Input and Output PCB (with box):	UTY-XCSX + UTZ-GXRA
External Connect Kit:	UTY-XWZXZG

Dimensions

Indoor unit : AUXG18/22/24/30/36/45/54KRLB

(Unit : mm)



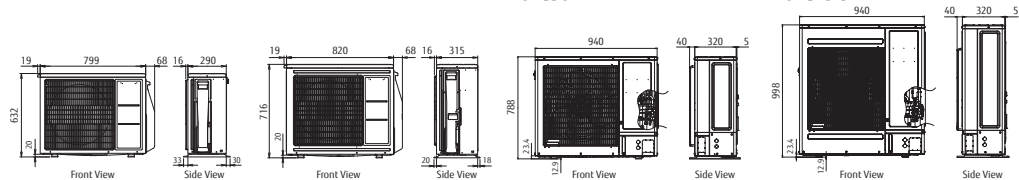
Outdoor unit :
AOYG18/22KBTB

AOYG24KBTB

AOYG30/36KBTB
AOYG36KRTA

AOYG45/54KBTB
AOYG45/54KRTA

() : AUXG18/22/24KRLB



Specifications

Model No.	Indoor unit		Outdoor unit																			
			AUXG18KRLB	AUXG22KRLB	AUXG24KRLB	AUXG30KRLB	AUXG36KRLB	AUXG45KRLB	AUXG54KRLB	AUXG36KRLB	AUXG45KRLB	AUXG54KRLB										
			AOYG18KBTB	AOYG22KBTB	AOYG24KBTB	AOYG30KBTB	AOYG36KBTB	AOYG45KBTB	AOYG54KBTB	AOYG36KRTA	AOYG45KRTA	AOYG54KRTA										
Power Source			Single-phase, ~230V, 50Hz						3-phase, ~400V, 50Hz													
Capacity	Cooling	kW	5.2 (0.9-5.9)	6.0 (0.9-6.7)	6.8 (0.9-8.0)	8.5 (2.8-10.0)	9.5 (2.8-11.2)	12.1 (4.0-14.0)	13.4 (4.5-14.5)	9.5 (2.8-11.2)	12.1 (4.0-14.0)	13.4 (4.5-14.5)										
	Heating		6.0 (0.9-7.5)	7.0 (0.9-8.0)	7.5 (0.9-9.1)	10.0 (2.7-11.2)	10.8 (2.7-12.7)	13.5 (4.2-16.2)	15.5 (4.7-16.5)	10.8 (2.7-12.7)	13.5 (4.2-16.2)	15.5 (4.7-16.5)										
Input Power	Cooling/Heating	kW	1.36/1.58	1.71/1.82	1.89/1.90	2.44/2.51	2.91/2.45	3.61/3.21	4.41/4.16	2.91/2.45	3.61/3.21	4.41/4.16										
EER	Cooling	W/W	3.82	3.51	3.60	3.49	3.26	3.35	3.04	3.26	3.35	3.04										
	Heating		3.80	3.85	3.95	3.98	4.40	4.20	3.73	4.40	4.20	3.73										
Pdesign	Cooling/Heating(-10°C)	kW	5.2/4.4	6.0/4.8	6.8/6.0	8.5/8.0	9.5/8.7	-	-	9.5/8.7	-	-										
SEER	Cooling	W/W	7.00	7.00	6.60	6.70	6.55	-	-	6.55	-	-										
	Heating (Average)		4.30	4.40	4.20	4.30	4.30	-	-	4.30	-	-										
Energy Efficiency Class	Cooling		A++	A++	A++	A++	A++	-	-	A++	-	-										
	Heating (Average)		A+	A+	A+	A+	A+	-	-	A+	-	-										
Max. Operating Current	Cooling/Heating	A	12.1	12.6	13.6	22.6	22.6	28.5	28.5	10.5	14.0	14.0										
Annual Energy Consumption	Cooling	kWh/a	260	300	360	444	507	-	-	507	-	-										
	Heating		1,431	1,527	1,999	2,601	2,828	-	-	2,828	-	-										
Moisture Removal		l/h	1.5	2.2	2.7	2.5	3.3	4.5	5.0	3.3	4.5	5.0										
Sound Pressure Level	Indoor (Cooling)	H/M/L/Q	33/32/31/28																			
	Indoor (Heating)		33/32/31/28																			
	Outdoor (Cooling/Heating)	High	50/50																			
Sound Power Level	Indoor (Cooling/Heating)	High	47/47																			
	Outdoor (Cooling/Heating)		High	62/62																		
	Airflow Rate	Indoor / Outdoor (Cooling)	High	1,050/2,160		1,050/2,240		1,150/2,700		1,600/3,750		1,870/3,750		2,000/4,450		2,100/4,450		1,870/3,750		2,000/4,450		2,100/4,450
	Indoor / Outdoor (Heating)	High		1,050/1,830		1,050/1,960		1,150/2,700		1,600/3,750		1,870/3,750		2,000/4,450		2,100/4,450		1,870/3,750		2,000/4,450		2,100/4,450
Net Dimensions	Indoor	mm	246x840x840		246x840x840		246x840x840		288x840x840		288x840x840		288x840x840		288x840x840		288x840x840		288x840x840		288x840x840	
H x W x D	Outdoor		mm	632x799x290		632x799x290		716x820x315		788x940x320		788x940x320		998x940x320		998x940x320		788x940x320		998x940x320		998x940x320
Weight	Indoor	kg(lbs)	23 (51)		23 (51)		24 (53)		26 (57)		29 (64)		29 (64)		29 (64)		29 (64)		29 (64)		29 (64)	
	Outdoor	kg(lbs)	36 (79)		38 (84)		42 (93)		52 (115)		52 (115)		67 (148)		67 (148)		67 (148)		67 (148)		67 (148)	
Connection Pipe Diameter (Liquid / Gas)		mm	6.35/12.70		6.35/12.70		6.35/12.70		9.52/15.88		9.52/15.88		9.52/15.88		9.52/15.88		9.52/15.88		9.52/15.88		9.52/15.88	
Drain hose Diameter (I.D./O.D.)		mm	25/32		25/32		25/32		25/32		25/32		25/32		25/32		25/32		25/32		25/32	
Max Pipe Length (Pre-Charge)		m	30 (20)		30 (20)		30 (20)		50 (30)		50 (30)		50 (30)		50 (30)		50 (30)		50 (30)		50 (30)	
Max Height Difference		m	20		25		25		30		30		30		30		30		30		30	
Operation Range	Cooling	°CDB	-15 to 46		-15 to 46		-15 to 46		-15 to 46		-15 to 46		-15 to 46		-15 to 46		-15 to 46		-15 to 46		-15 to 46	
	Heating		-15 to 24		-15 to 24		-15 to 24		-15 to 24		-15 to 24		-15 to 24		-15 to 24		-15 to 24		-15 to 24		-15 to 24	
Refrigerant	Type (Global Warming Potential)	kg(CO2eq-T)	R32 (675)		R32 (675)		R32 (675)		R32 (675)		R32 (675)		R32 (675)		R32 (675)		R32 (675)		R32 (675)		R32 (675)	
	Charge		1.02 (0.689)		1.25 (0.844)		1.25 (0.844)		1.90 (1.283)		1.90 (1.283)		2.70 (1.823)		2.70 (1.823)		1.90 (1.283)		2.70 (1.823)		2.70 (1.823)	
Cassette Grille	Variation	UTG-UKYA-W: White Color with touch panel wired remote controller UTG-UKYC-W: White Color / UTG-UKYA-B*1: Black Color																				
	Dimensions (H x W x D)	mm	53x950x950		53x950x950		53x950x950		53x950x950		53x950x950		53x950x950		53x950x950		53x950x950		53x950x950		53x950x950	
	Weight	kg(lbs)	6.0 (13)		6.0 (13)		6.0 (13)		6.0 (13)		6.0 (13)		6.0 (13)		6.0 (13)		6.0 (13)		6.0 (13)		6.0 (13)	

Note : Specifications are based on the following conditions.
 Cooling : Indoor temperature of 27°CDB / 19°CWB, and outdoor temperature of 35°CDB / 24°CWB.
 Heating : Indoor temperature of 20°CDB / (15°CWB), and outdoor temperature of 7°CDB / 6°CWB.

*1: IR Receiver kit and human sensor kit cannot be connected.

*Specifications and design are subject to change without notice for further improvement.
 *Actual products' colors may be different from the colors shown in this printed material.

Distributed by :



ISO 9001
Certified number: 01 100 075229
Fujitsu General (Thailand) Co., Ltd.



ISO 9001
Certified number: 159172007285M
Fujitsu General Central Air-conditioner(Wuxi) Co., Ltd.

FUJITSU GENERAL LIMITED

3-3-17, Suenaga, Takatsu-ku, Kawasaki 213-8502, Japan

<https://www.fujitsu-general.com/>

Copyright© 2019 Fujitsu General Limited. All rights reserved. 3EFNP36-1907E